

FIL ROUGE 5<sup>th</sup> ELEMENT

OXI UP SCHERMI

CONTENITORI UNIVERSALI

PIEGO CHIUDO SEGUO

JERA ENOSI E.O.S. IULIO

ELITE DELTA I-MEET

PAUSA CONVIVIO

FUNGO SEGNO ICARO

REGOLO KYOTO PODIO

NICE POINT

**LAS**

2023

finiture | finishes | finitions

LEGNI | WOODS

○ = MELAMINICI | MELAMINE



**COD. 03**  
**ROVERE | OAK**  
 Fil Rouge - 5<sup>th</sup> Element - Oxi - Up - Universal Screens - Multipurpose tables - Universal Cabinets - Delta - Point - Break & Coffee tables



**COD. 07**  
**NOCE CLASSICO | CLASSIC WALNUT**  
 5<sup>th</sup> Element - Oxi - Up - Universal Screens - Multipurpose tables - Universal Cabinets - Delta Point - Break & Coffee tables



**COD. 09**  
**ROVERE NATURALE | NATURAL OAK**  
 E.O.S. - Break & Coffee tables



**COD. 13**  
**NOCE MODERNO | MODERN WALNUT**  
 E.O.S. - Break & Coffee tables



**COD. 20**  
**MUSCHIO | MOSS GREEN**  
 Fil Rouge - 5<sup>th</sup> Element - Oxi - Universal Screens - Universal Cabinets - Break & Coffee tables



**COD. 38**  
**GRIGIO | GREY**  
 5<sup>th</sup> Element - Oxi - Up - Universal Screens - Multipurpose tables - Universal Cabinets - Point - Break & Coffee tables



**COD. 44**  
**STONE GREY | STONE GREY**  
 Fil Rouge - 5<sup>th</sup> Element - Oxi - Up - Universal Screens - Universal Cabinets - Jera - Delta - Point - Break & Coffee tables



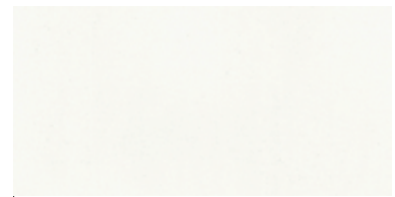
**COD. 51**  
**NERO | BLACK**  
 Fil Rouge - 5<sup>th</sup> Element - Oxi - Universal Screens - Multipurpose tables - Universal Cabinets - E.O.S. - Elite - Break & Coffee tables



**COD. 63**  
**PIOPPO MORO | DARK POPLAR**  
 5<sup>th</sup> Element - Universal Screens - Multipurpose tables - Universal Cabinets - Elite - Delta - Break & Coffee tables



**COD. 64**  
**PIOPPO LIGHT | LIGHT POPLAR**  
 E.O.S. - Elite - Break & Coffee tables



**COD. 68**  
**BIANCO | WHITE**  
 Fil Rouge - 5<sup>th</sup> Element - Oxi - Up - Universal Cabinets - Point - Break & Coffee tables - Delta - Universal Screens - Multipurpose tables - Break & Coffee tables

▲ = ESSENZE DI LEGNO | WOOD ESSENCES

△ = 3D-FOIL



**COD. 25**  
**EBANO CLASSICO** | CLASSIC EBONY ▲  
Elite



**COD. 26**  
**OLMO MODERNO** | MODERN ELM ▲  
Elite



**COD. 27**  
**NOCE CANALETTO** | CANALETTO WALNUT ▲  
Elite



**COD. 12**  
**OLMO GREY** | GREY ELM △  
Jera - Iulio - I Meet - Nice - Break & Coffee tables



**COD. 30**  
**NOCE BALI** | BALI WALNUT △  
Jera - Iulio - I Meet - Nice - Break & Coffee tables



**COD. 37**  
**NOCE PACIFIC** | PACIFIC WALNUT △  
Enosi - Break & Coffee tables



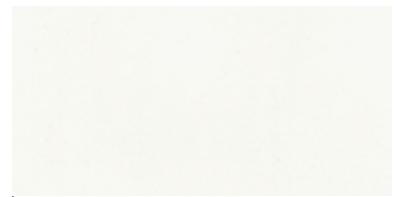
**COD. 52**  
**FRASSINO BROWN** | BROWN ASH △  
Jera - Iulio - I Meet - Nice - Break & Coffee tables



**COD. 56**  
**NERO** | BLACK △  
Enosi - Iulio - I Meet - Nice - Break & Coffee tables



**COD. 67**  
**TEAK SAMOA** | SAMOA TEAK △  
Iulio - I Meet - Nice - Break & Coffee tables

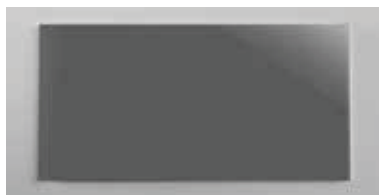


**COD. 68**  
**BIANCO** | WHITE △  
Enosi - Iulio - I Meet - Nice - Break & Coffee tables

## VETRI | GLASS □



**COD. 10** □  
**NERO** | BLACK  
5<sup>th</sup> Element - Enosi - E.O.S. - Elite - I Meet - Nice -  
Break & Coffee tables



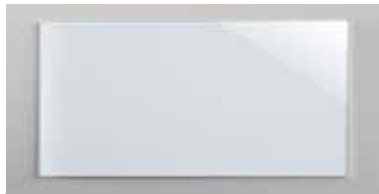
**COD. 77** □  
**VETRO TRASPARENTE FUMÉ**  
TRANSPARENT SMOKE GLASS  
E.O.S.



**COD. 99** □  
**BIANCO SATINATO** | SATINED WHITE  
Universal Cabinets - Delta - Nice



**COD. 71** □  
**GRIGIO LONDRA** | LONDON GREY  
Elite



**COD. 78** □  
**BIANCO EXTRA** | EXTRA WHITE  
Enosi - Nice



**COD. 81** □  
**NERO MARMORIZZATO** | MARBLED BLACK  
Break & Coffee tables



**COD. 72** □  
**TORTORA** | GREY BEIGE  
5<sup>th</sup> Element - Break & Coffee tables



**COD. 79** □  
**BIANCO** | WHITE  
5<sup>th</sup> Element - Break & Coffee tables

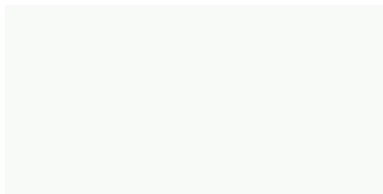


**COD. 82** □  
**BIANCO MARMORIZZATO** | MARBLED WHITE  
Break & Coffee tables

## METALLI | METALS



**COD. AR 02**  
**ARGENTO** | SILVER  
5<sup>th</sup> Element - Oxi - Universal Cabinets - Break & Coffee tables - OYO Accessories



**COD. BI 02** (RAL 9016)  
**BIANCO** | WHITE  
Fil Rouge - 5<sup>th</sup> Element - Oxi - Universal Cabinets - Enosi - Delta - Break & Coffee tables - OYO Accessories



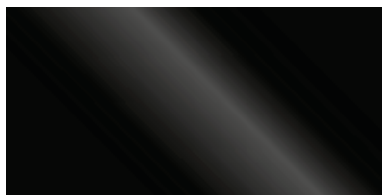
**COD. CR 01**  
**CROMATO** | CHROMED  
5<sup>th</sup> Element - Enosi - I Meet - Multipurpose tables - Break & Coffee tables



**COD. IG 01**  
**INOX GREY** | GREY INOX  
Iulio - Break & Coffee tables



**COD. AV 02** (RAL 5014)  
**AVIO** | NAVY BLUE  
Break & Coffee tables



**COD. NR 03**  
**NERO (OPACO)** | (MATT) BLACK  
Fil Rouge - 5<sup>th</sup> Element - Oxi - Universal screens - Universal Cabinets - Enosi - Break & Coffee tables - OYO Accessories



**COD. SG 01**  
**STONE GREY** | STONE GREY  
Fil Rouge - 5<sup>th</sup> Element - Oxi - Universal screens - Universal Cabinets - Delta - Break & Coffee tables - OYO Accessories

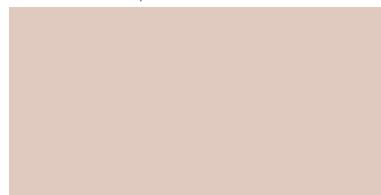


**COD. VR 01**  
**MUSCHIO** | MOSS GREEN  
Fil Rouge - Oxi - Universal screens - Universal Cabinets - Break & Coffee tables - OYO Accessories

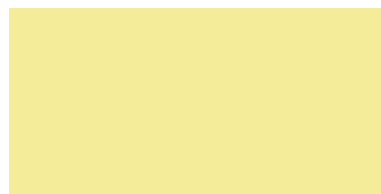


**COD. GL 02** (RAL 1005)  
**SENAPE** | MUSTARD  
Break & Coffee tables

## COLORI PASTELLO pastel colours



**COD. CP 01** (Pantone 4755 C)  
**CIPRIA** | POWDER PINK  
Oxi - Universal screens - Universal Cabinets - Break & Coffee tables - OYO Accessories



**COD. GL 01** (Pantone 600 C)  
**GIALLO** | YELLOW  
Oxi - Universal screens - Universal Cabinets - OYO Accessories



**COD. VR 02** (Pantone 4178 C)  
**VERDE** | GREEN  
Oxi - Universal screens - Universal Cabinets - Break & Coffee tables - OYO Accessories



**COD. CL 01** (Pantone 545 C)  
**CELESTE** | LIGHT BLUE  
Oxi - Universal screens - Universal Cabinets - OYO Accessories



**COD. OR 02** (RAL 2001)  
**ARANCIO** | ORANGE  
Break & Coffee tables

**ELEMENTI RIVESTITI IN TESSUTO PRESENTI NEI VARI MODELLI LAS MOBILI**  
**ELEMENTS COVERED IN FABRIC PRESENT IN THE VARIOUS MODELS by LAS MOBILI**

		Eco-pelle	Crepe	Stretch	Melange	Trevi	Lana	Chili by Gabriel	Taylor by Flukso	Go Check by Gabriel	Crisp by Gabriel	Feltro Felt
<b>Category</b>		<b>B</b>	<b>B</b>	<b>D</b>	<b>D</b>	<b>D</b>	<b>E</b>	<b>E</b>	<b>F</b>	<b>G</b>	<b>I</b>	
<b>FIL ROUGE</b>												
	CUSCINI cushions		●	●	●	●	●	●	●	●	●	●
	SCHERMI FRONTALI SCRIVANIE front screens for desks		●	●	●	●	●	●	●	●	●	●
<b>5<sup>th</sup> ELEMENT</b>												
	CUSCINI cushions		●	●	●	●	●	●	●	●	●	●
<b>OXI</b>												
	ACCESSORI accessories			●	●		●					
	KIT RIVESTIMENTO cover kit			●								
<b>UP</b>												
	SCHERMI FRONTALI front screens		●	●	●	●	●	●	●	●	●	●
<b>SCHERMI UNIVERSALI universal screens</b>												
	SCHERMI TIPO (S2-S3) screens type (S2-S3)		●	●	●	●	●	●	●	●	●	●
	SCHERMI TIPO (S4) screens type (S4)			●	●							
	SCHERMI FELTRO (S5) felt screens (S5)											●
	ACCESSORI accessories			●	●		●					
	KIT RIVESTIMENTO (S1) cover kit (S1)			●								
<b>CONTENITORI UNIVERSALI universal cabinets</b>												
	CUSCINI cushions		●	●	●	●	●	●	●	●	●	●
<b>JERA (Executive)</b>												
	FIANCHI E SCHIENE SCRIVANIE, SOTTOMANO E SPALLA VERTICALE side panels, back panels, desk pad, vertical panel	●										

Cat. B

CREPE



100% Poliestere FR-TREVIRA CS  
Peso: 330 gr/m<sup>2</sup>  
Martindale 100.000 cicli  
Ignifugo classe 1

100% Polyester FR-TREVIRA CS  
Weight: 330 gr/m<sup>2</sup>  
Martindale 100.000 turns  
Fire-retardant class 1 (one)



**522 - Grigio perla**  
Light grey



**525 - Avorio**  
Ivory



**528 - Verde acido**  
Acid green



**530 - Artico**  
Arctic



**534 - Giallo**  
Yellow



**523 - Grigio scuro**  
Dark grey



**526 - Nocciola**  
Hazel



**529 - Petrolio**  
Petroleum



**531 - Celeste**  
Light blue



**535 - Arancio**  
Orange



**524 - Nero**  
Black



**527 - Malto**  
Malt



**532 - Cobalto**  
Cobalt



**536 - Vinaccio**  
Wine red



**533 - Blu**  
Blue



**537 - Rosso**  
Red



**538 - Prugna**  
Plum

**IT**

Il codice a tre cifre individua il colore della stoffa applicata nell'articolo / componente. Ogni partita di tessuto può presentare variazioni di tonalità rispetto sia al campionario sia ad elementi prodotti in tempi diversi.

**EN**

The three-digit code identifies the colour of the fabric for each item / component. Each fabric batch can show colour differences compared to the fabric samples and to the products manufactured at different times.

Leggere differenze di colore tra un lotto di produzione e l'altro, devono essere considerate nella norma. I colori stampati sono indicativi e potrebbero essere sostituiti o modificati nel tempo a discrezione di LAS.

Slight colour differences from lot to lot must be considered within commercial tolerances. Please consider that the colours in these pages are printed, so they can't be considered as real. They can be changed or modified in the life time by LAS.



## Cat. D

### STRETCH



100% Poliestere FR RICICLATO  
Peso: 340 gr/m<sup>2</sup>  
Martindale 50.000 cicli  
Ignifugo classe 1

100% Polyester FR RECYCLED  
Weight: 340 gr/m<sup>2</sup>  
Martindale 50.000 turns  
Fire-retardant class 1 (one)



**585 - Avorio**  
Ivory



**589 - Tortora**  
Grey beige



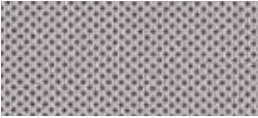
**591 - Verde acido**  
Acid green



**593 - Azzuro sky**  
Sky blue



**595 - Giallo fresia**  
Freesia yellow



**586 - Grigio**  
Grey



**590 - Marrone**  
Brown



**592 - Verde bosco**  
Wood green



**594 - Blu**  
Blue



**596 - Arancio**  
Orange



**587 - Antracite**  
Anthracite



**597 - Rosso**  
Red



**588 - Nero**  
Black



**598 - Amaranto**  
Amaranth

## Cat. D

### MELANGE



100% Poliestere FR RICICLATO  
Peso: 340 gr/m<sup>2</sup>  
Martindale 50.000 cicli  
Ignifugo classe 1

100% Polyester FR RECYCLED  
Weight: 340 gr/m<sup>2</sup>  
Martindale 50.000 turns  
Fire-retardant class 1 (one)



**603 - Cenere**  
Ash



**606 - Tortora**  
Grey beige



**608 - Verde acido**  
Acid green



**611 - Artico**  
Arctic



**614 - Petunia**  
Petunia



**604 - Grigio**  
Grey



**607 - Nocciola**  
Hazel



**609 - Muschio**  
Moss green



**612 - Azzurro**  
Azure



**615 - Ribes**  
Currant



**605 - Fumo**  
Smoke



**610 - Verdone**  
Dark green



**613 - Cobalto**  
Cobalt



**616 - Granata**  
Garnet



Cat. D

TREVI



100% Poliestere FR - TREVIRA CS  
Peso: 450 gr/m<sup>2</sup>  
Martindale 70.000 cicli  
Ignifugo classe 1

100% Polyester FR - TREVIRA CS  
Weight: 450 gr/m<sup>2</sup>  
Martindale 70.000 turns  
Fire-retardant class 1 (one)



**621 - Grigio**  
Grey



**625 - Tortora**  
Grey beige



**628 - Verde acido**  
Acid green



**630 - Celeste**  
Light blue



**633 - Odra**  
Ocher



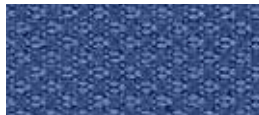
**622 - Porfido**  
Porphyry



**626 - Nocciola**  
Hazel



**629 - Petrolio**  
Petroleum



**631 - Pervinca**  
Periwinkle



**634 - Mattone**  
Brick red



**623 - Grigio scuro**  
Dark grey



**627 - Marrone**  
Brown



**632 - Blu**  
Blue



**635 - Petunia**  
Petunia



**624 - Nero**  
Black



**636 - Rosso**  
Red



**637 - Amaranth**  
Amaranth

## Cat. E

### LANA

75% Lana - 25% Poliammide  
Peso: 335 gr/m<sup>2</sup>  
Martindale 100.000 cicli

75% Wool - 25% Polyamide  
Weight: 335 gr/m<sup>2</sup>  
Martindale 100.000 turns



**642 - Grigio chiaro**  
Light grey



**645 - Tortora**  
Grey beige



**647 - Verde acido**  
Acid green



**649 - Artico**  
Arctic



**653 - Ruggine**  
Russet



**643 - Grigio scuro**  
Dark grey



**646 - Marrone**  
Brown



**648 - Muschio**  
Moss green



**650 - Malibú**  
Malibu



**654 - Mattone**  
Brick red



**644 - Fumo**  
Smoke



**651 - Pervinca**  
Periwinkle



**655 - Fuoco**  
Fire red



**652 - Avio**  
Navy blue

## Cat. E

### CHILI by Gabriel



100% Poliestere riciclato post-consumo FR  
(FR all'interno della fibra)  
Peso: 335 gr/m<sup>2</sup>  
Martindale 60.000 cicli  
Ignifugo classe 1

100% Post-consumer recycled Polyester FR  
(FR inside the fiber)  
Weight: 335 gr/m<sup>2</sup>  
Martindale 60.000 turns  
Fire-retardant class 1 (one)



**675 - Grigio chiaro**  
Light grey



**677 - Avorio polvere**  
Powder ivory



**679 - Salvia**  
Sage



**681 - Acquamarina**  
Acquamarine



**683 - Senape**  
Mustard



**676 - Antracite**  
Anthracite



**678 - Tortora**  
Grey beige



**680 - Fieno**  
Hay



**682 - Avio**  
Navy blue



**684 - Cipria**  
Powder pink



**685 - Vinaccio**  
Wine red

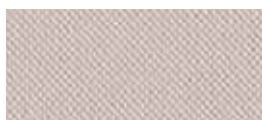
## Cat. F

### TAYLOR F.R. by Flukso



100% Poliestere  
Peso: 330 gr/m<sup>2</sup>  
Martindale 60.000 cicli  
Ignifugo classe 1

100% Polyester  
Weight: 330 gr/m<sup>2</sup>  
Martindale 60.000 turns  
Fire-retardant class 1 (one)



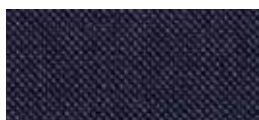
**689 - Marna**  
Marl



**693 - Tortora**  
Grey beige



**695 - Oliva**  
Olive



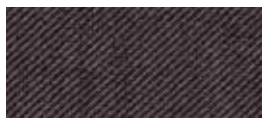
**697 - Avio**  
Navy blue



**699 - Ocra**  
Ocher



**690 - Grigio scuro**  
Dark grey



**694 - Tabacco**  
Tobacco



**696 - Petrolio**  
Petroleum



**698 - Blu notte**  
Night blue



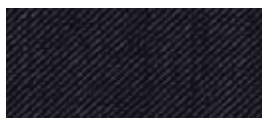
**700 - Mattone**  
Brick red



**691 - Grafite**  
Graphite



**701 - Prugna**  
Plum



**692 - Nero**  
Black



**702 - Rosso**  
Red



**703 - Vinaccio**  
Wine red

## Cat. G

### GO CHECK by Gabriel



100% Trevira CS  
Peso: 310 gr/m<sup>2</sup>  
Martindale 80.000 cicli  
Ignifugo classe 1

100% Trevira CS  
Weight: 310 gr/m<sup>2</sup>  
Martindale 80.000 turns  
Fire-retardant class 1 (one)



**736 - Grigio**  
Grey



**738 - Beige**  
Beige



**741 - Verde**  
Green



**744 - Azzurro**  
Azure



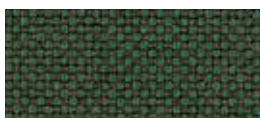
**748 - Giallo**  
Yellow



**737 - Nero**  
Black



**739 - Fango**  
Mud



**742 - Prato**  
Lawn



**745 - Turchese**  
Turquoise



**749 - Arancio**  
Orange



**740 - Cacao**  
Cocoa



**743 - Bottiglia**  
Bottle



**746 - Mare**  
Sea



**750 - Pesca**  
Peach



**747 - Blu**  
Blue



**751 - Rosso**  
Red



**752 - Amaranto**  
Amaranth





93% Lana Nuova Zelanda  
7% Poliammide  
Peso: 328 gr/m2  
Martindale 200.000 cicli  
Ignifugo classe 1

93% New Zeland Wool  
7% Polyamide  
Peso: 328 gr/m2  
Martindale 200.000 turns  
Fire-retardant class 1 (one)



**841 - Grigio chiaro**  
Light grey



**843 - Avorio polvere**  
Powder ivory



**845 - Limo**  
Silt green



**847 - Acquamarina**  
Acquamarine



**849 - Senape**  
Mustard



**842 - Antracite**  
Anthracite



**844 - Tortora**  
Grey beige



**846 - Salvia**  
Sage



**848 - Avio**  
Navy blue



**850 - Cipria**  
Powder pink



**851 - Vinaccio**  
Wine red